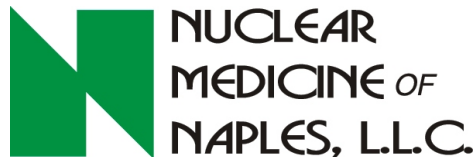
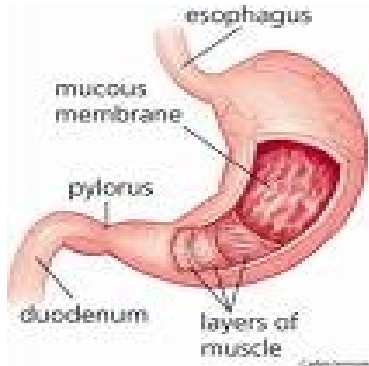


What is a Gastric Emptying Scan

- ◆ How Should I prepare for It?
- ◆ What Can I Expect During the Test?
- ◆ Answers to Common Questions.



An ICANL Accredited Facility since 1999

W hat Is a Gastric Emptying & Motility Study?

This non-invasive study is a nuclear medicine procedure that uses a tiny dose of a radiopharmaceutical (radioactive Material) added to a solid or liquid meal to evaluate the motor functions of the stomach and intestinal tract.

The Gastric emptying study is used to assist your physician in determining whether various clinical symptoms you may be experiencing are related to a gastric motor function problem.

Symptoms such as:

1. Nausea, vomiting
2. Upper abdominal discomfort, bloating
3. Chronic aspiration.

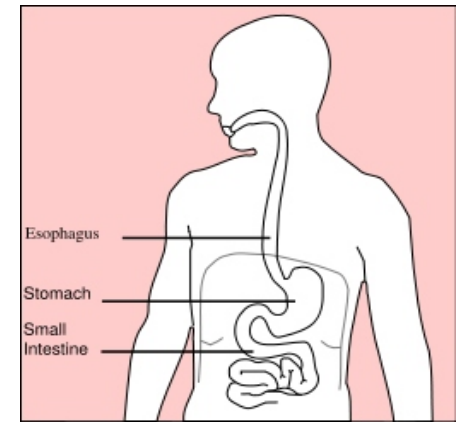
These may be related to diseases such as:

1. Suspected gastroparesis(slow movement of food through stomach)
2. Gastroesophageal reflux
3. Other motility disturbances such as obstruction

It will be important to know whether you have other related diseases such as:

1. Hiatal hernia or gastroesophageal reflux.
2. Medications such as Reglan (Metoclopramide), Motilium (domperidone), or Propulsid (Cisapride)
3. Prior surgeries.

The gastric emptying study is usually performed in the early morning and can last at least 90 minutes and sometimes up to 3 hours.



H ow Should I Prepare for it?

1. Do not consume food or liquids at least 8 hours prior to your test.
2. Any early morning medications should be avoided until after the test has been performed unless instructed otherwise by your doctor.

Your physician may decide to temporarily discontinue certain medications prior to the test. They may offset the effectiveness of the test. **DO NOT STOP** medications on your own without checking with your physician.

W hat Can I Expect During the Test?

The gastric emptying test is a relatively simple, painless, safe, and non-invasive procedure.

Please check in at the facility at your scheduled time. Please have your insurance card(s) with you as well as the requisition form from your doctor.

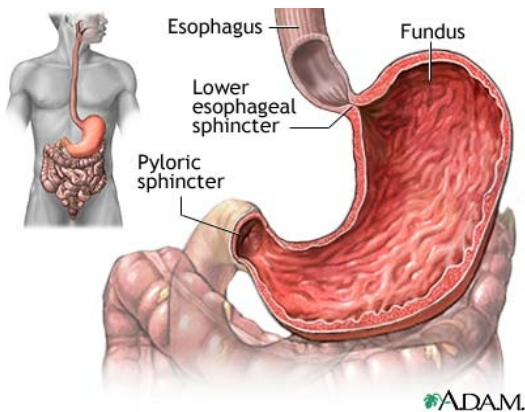
You will meet with the technologist. He will thoroughly explain the procedure to you and will perform the scans.

You will be required to consume a radio-labeled meal. We may have you bring a favorite breakfast meal such as muffin, sandwich, egg toast sandwich, etc.

Liquids such as juice, mild or water may be used if a solid meal cannot be consumed. Following the meal you will be scanned for 5 minutes. Repeat pictures will be performed over the next 90 minutes up to 3 hours.

The technologist will instruct you as to timing and duration of all scans.

A written report will be sent to your physician upon completion of the test. Your doctor will then explain the results to you.



***** A PREGNANCY TEST ****

IS REQUIRED PRIOR FOR ANY FEMALE OF CHILD BEARING AGE UNLESS YOU HAVE HAD TUBAL LIGATION OR HYSTERECTOMY. FOR ANY OTHER REASONING, PLEASE CALL OUR TECHNOLOGISTS FOR ADDITIONAL INFORMATION.

IF REQUIRED, IT SHOULD BE PERFORMED THE DAY BEFORE YOUR APPOINTMENT WITH RESULTS IN OUR OFFICE THE DAY PRIOR TO YOUR APPOINTMENT.

Answers to Common Questions

How Long Will the Test Last?

The test usually last 90 minutes, but may last up to several hours depending on the transit time of food through your stomach. Please call our office if you have any dietary restrictions.

Are there any side effects from the food?

No. You will be asked to bring a favorite breakfast meal.

I am Allergic to Iodine. Can I still have the test?

Yes. There is no iodine within the radiopharmaceutical used in the test.

I'm claustrophobic, will I be enclosed in the machine?

No. The camera will be positioned over your abdomen. Most patients that are claustrophobic have no problem having the scan.

Do I Have to Stop Any of My Medications?

Your physician may decide to temporarily discontinue certain medications prior to the test. Please DO NOT stop any medications on your own without checking with your physician first.

I am diabetic. How do I prepare for this test?

You will be asked to bring your insulin with you to take with your meal. We want to maintain a consistent blood sugar level with this test.

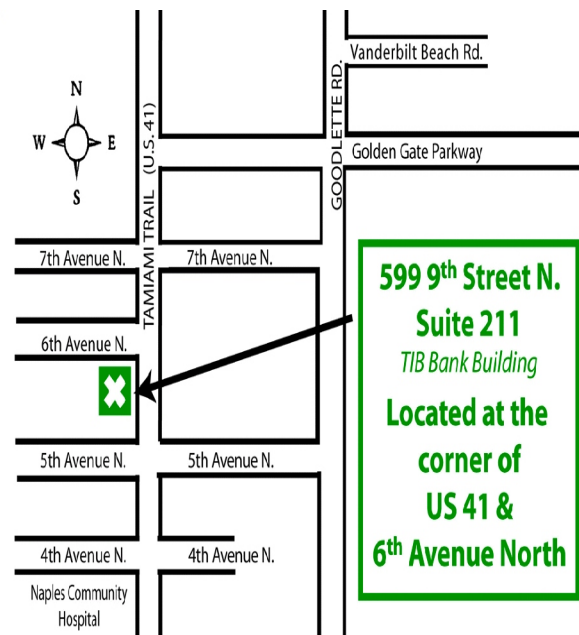
YOUR APPOINTMENT INFORMATION

DATE: _____

TIME: _____

Directions:

599 - 9th Street St. N., Suite 211
SW Corner of 6th Ave. N & Tamiami Trail N, on west side of street in TIB Bank Building. Yellow/Orange Building.



Phone: 239-263-8001