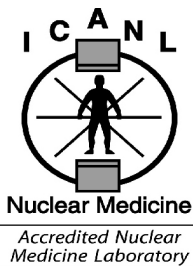
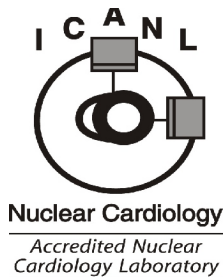
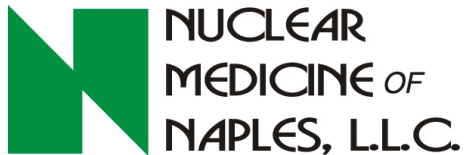
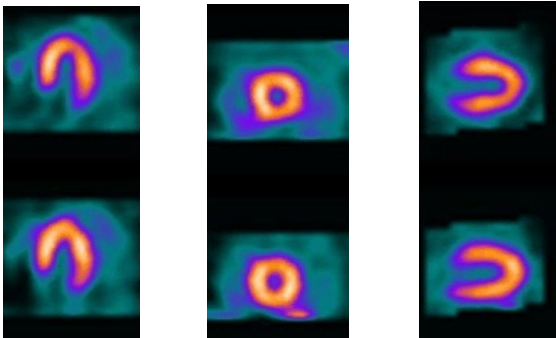


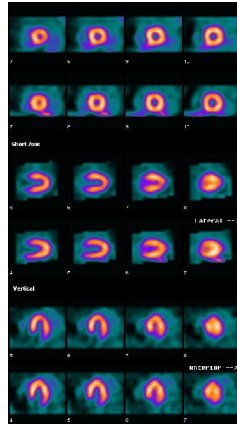
# WHAT IS A PHARMACOLOGIC MYOVIEV STRESS TEST

- ◆ How should I prepare for it?
- ◆ What can I expect during the test?
- ◆ Answers to common questions.



ICANL Accredited Facility since 1999

# WHAT IS A PHARMACOLOGIC MYOVIEV STRESS TEST?



The Pharmacologic Myoview Test combines a medicine induced simulation of a stress test (utilizing Regadenoson, Adenosine, Dobutamine or Persantine) while you lay on a comfortable stretcher bed, along with two (2) pictures of the heart. This helps evaluate the adequacy of the blood supply reserve to the heart muscle during stress and compares this to the resting blood supply.

The heart muscle receives blood from vessels called coronary arteries. If these arteries become partially blocked or narrowed, the heart muscle may not receive the blood it needs to function properly. This narrowing of the coronary arteries is called coronary artery disease (CAD).

With CAD, the heart muscle may not receive sufficient blood resulting in chest pain called angina or other symptoms, or may not produce any outward physical signs of the problem. A Pharmacologic Myoview study is useful in detecting the presence of CAD in patients unable to complete an exercise stress test.

# HOW SHOULD I PREPARE FOR IT?

The Pharmacologic Myoview Test may be performed all in 1 day or may be divided over 2 days. You will be informed of your schedule by your doctors office or at the time of booking your appointment.

You may have a very light breakfast 2 hrs prior to tests. Water or juice may be taken at any time both days. **NO CAFFEINE** (No tea, regular or Decaffeinated coffee or other **CAFFEINE-CONTAINING PRODUCTS** like chocolate or medications such as Theo-Dur Theophylline, Trental, Excedrin ) 24 hours prior to pharmacologic (stress) portion of test.

**LADIES: PLEASE WEAR A TWO PIECE OUTFIT, NO DRESSES or UPPER BODY LOTIONS.**

Your Physician may decide to temporarily discontinue certain medications prior to the test. These are discontinued because they may offset the effectiveness of the test. **DO NOT STOP** any medication on your own without checking with your physician. If you were informed to stop any medication, you may resume taking your medications following the Pharmacologic portion of the test.

# WHAT CAN I EXPECT DURING THE TEST?

Prior to the test, you will be asked to sign a consent form. Please read it carefully and if you have any questions do not hesitate to ask the technologist or the physician supervising the test. He or she can explain the entire procedure before it begins.

The "Rest" Images require a tiny arm vein injection of Myoview while sitting. You will be asked to return in 1/2 - 1 hour for pictures of your heart. If you are having a 2 day procedure you will be able to leave after these pictures are taken and return the next day for the stress portion.

Upon returning the next day (if a 2 day procedure) or after the "resting" images have been taken, several electrode pads will be placed on your chest. These pads will be connected to an electrocardiogram (ECG) monitor so that your heart rhythm can be watched closely throughout the test.

Also, a small intravenous catheter will be inserted into your arm vein which will be used to infuse the medicine and Myoview into your blood stream. The intravenous will be removed when the test has been completed.

The stress medications (Adenosine, Regadenoson, Persantine, or Dobutamine) will increase blood flow into your heart muscle (Adenosine, Regadenoson, or Persantine), or will increase your heart rate (Dobutamine ). They are infused into the intravenous line at a specific rate based upon your body weight. Your heart rate and blood pressure may change with these medications.

Blood pressure will be monitored along with your EKG.

These stress medicines may cause you to experience a flushed feeling, warmth, shortness of breath, chest pain or pressure as well as palpitations or other rare side effects. If you experience any of these symptoms at any time during the test, immediately tell the individual monitoring the test. If your symptoms worsen or persist, other medications are available to reverse any significant side effects.

The Myoview radioisotope will be injected through the IV line during the effects of the stress medicine. The Myoview is carried by the blood to the heart muscle. If blood flow is limited due to CAD, then the amount of Myoview in areas of your heart muscle may be reduced.

You can eat and/or drink after the stress test. The second set of images will be taken 1/2 - 1 hour following the stress test. You will have to lie down on a special table and a gamma camera will visualize the Myoview which has concentrated in your heart muscle. The camera is positioned close to your chest and rotates slowly around you taking pictures and it is VERY IMPORTANT to lie as still as possible. This set of pictures will be compared with the first set to assess the blood supply to your heart muscle during Pharmacologic stress and at rest.

A written report will be sent to your doctor upon completion of the test. Your doctor will then explain the test results to you.

## A NSWERS TO COMMON QUESTIONS

### How long will the test last?

**2 Day Protocol:** Approximately 1 ½ hours each day.

**1 Day Protocol:** Allow 3 to 4 hours for the test. You will be able to leave the facility in between scans if you wish to do so.

### How much radiation is involved?

The injection of Myoview results in a radiation exposure to your body of approximately 5.0 mSv (SV is a unit of measurement for radiation exposure), and will be gone from the body within 1 day. In comparison, the amount of radiation you already receive from all naturally occurring sources on an annual basis from food, air, water, ground and fall out is approximately 3.0 mSv.

### What is the risk factor for the exercise test?

The Pharmacologic portion of the test constitutes a risk factor equivalent to 1,000 miles of highway driving. Furthermore your physician has decided that the benefits of this test far outweigh the risks involved.

### When can I start taking my medicine again?

You can take your heart medication after completion of the Pharmacologic portion of the test.

### Will I be able to drive after the test? Yes.

### Are there any adverse reactions to Myoview?

An adverse reaction to the Myoview is extremely rare. **MYOVIEW IS NOT A DYE, IT CONTAINS NO IODINE.**

### Are there any contraindications?

If you are pregnant or there is a possibility you may be, or if you are breast-feeding, the Pharmacologic Myoview test may be inappropriate for you at this time.

### Are there any reactions to the medicine?

The medicines used may cause a flushed feeling, warmth, chest pressure or pain, palpitations or other rare side effects.

### Will I be Enclosed within the Scanning Machine?

No. Your head will not be placed under the machine at any time.

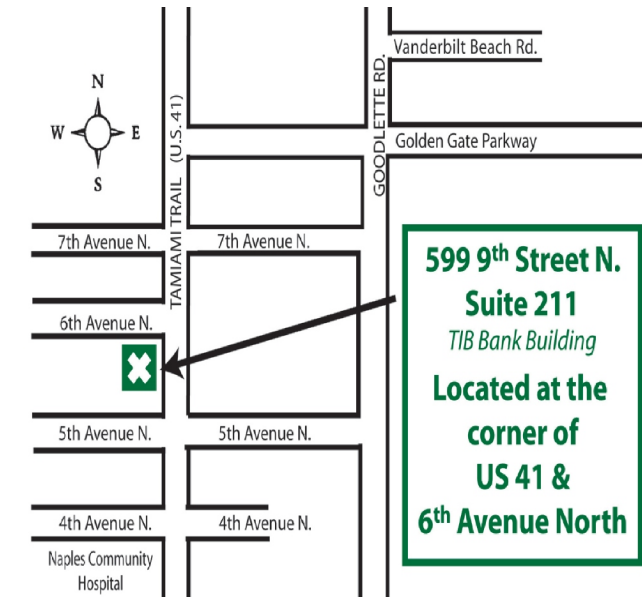
## YOUR APPOINTMENT INFORMATION

DATE: \_\_\_\_\_

TIME: \_\_\_\_\_

### Directions:

**599 - 9<sup>th</sup> Street St. N., Suite 211**  
**SW Corner of 6th Ave. N & Hwy.41**  
**( west side of Hwy. 41 {Tamiami Trail} )**  
**in TIB Bank Building. - 3 story Orange Building.**



**Phone: 239-263-8001**